



ARENACOMMUNITY

LET'S *DO* THIS

*HIGHLIGHTING THE WORK AND NEED OF
ARENA COMMUNITY*



**OPEN DOOR
CHARITY SHOP**



ARENACHURCH

**FOOD CLUB &
COMMUNITY SHOP**

**ARENA TALK
ARENA HOPE**

CONTENTS

<i>OUR VISION, PURPOSE AND OBJECTIVES</i>	<i>3</i>
<i>LETTER FROM KRISTIAN THORPE</i>	<i>5</i>
<i>THE BIG WHY</i>	<i>9</i>
<i>TESTIMONIALS</i>	<i>12</i>
<i>THE NEED, THE CHALLENGE AND THE COST</i>	<i>16</i>
<i>OUR BUSINESSES</i>	<i>18</i>
<i>ONE THOUSAND CLUB/ BUSINESS BUDDIES</i>	<i>22</i>
<i>THE WORK OF ARENA COMMUNITY</i>	<i>24</i>
<i>HOW CAN I GET INVOLVED</i>	<i>32</i>
<i>HOW CAN I GIVE</i>	<i>34</i>
<i>THANK YOU</i>	<i>35</i>

OUR VISION:

*TO MAKE THE
COMMUNITY
LIVEABLE AGAIN*

OUR MISSION STATEMENT:

**EVERYBODY IS
SOMEBODY
AT ARENA**

OUR **OBJECTIVES**

Helping thousands of people and families per month through several different initiatives that we run in Ilkeston, Mansfield, Nottingham and Belper and beyond to continue the objectives of Arena Community:-

- Provision of food and practical resources;
- Provision of quality housing via supported accommodation;
- Training, education and rehabilitation;
- Provide affordable and quality goods, furniture and clothing;
- Making communities liveable.

A letter from
KRISTIAN THORPE
*Lead Pastor and Founder of
Arena Community*



Dear Friend,

Thank you for your interest in the work of Arena Community. This charity was formed out of Arena Church to carry out practical help and works to people in Ilkeston, Mansfield,

Belper and Nottingham. People of every age, colour, demographic and background truly matter. With a particular focus on helping those who are living in dire poverty, loneliness, dysfunctionality and addiction.

We have a foundational truth that runs through Arena and the staff and this keeps us anchored to our mission:

“EVERYBODY is SOMEBODY at Arena.”

We place value on every person and will always seek to strengthen, lift, support, hold, help and lift people up!

With a small staff team and a large volunteer team, over the past decade we have accomplished this through

work amongst children and young people, starting after schools clubs for children and families facing challenging times, through our Foodbank that has helped thousands of families and people with food. We have given away tents and sleeping bags to the homeless; provided showering and laundry facilities and provided rooms and support through our Supported Living Programme. We've taught life classes, how to cook on a budget and handle finances. We have worked with over 45 partners to serve families, the elderly, the prisoner and the addicted. Our work is messy because there is much need and dysfunction in our world. It's hard because the problems

run deep and can be complex. We work in high-pressure environments where the stakes are high, emotions are fragile and despair and sadness is ever present. But we work with HOPE for a better day for children, families, the elderly, single parents, ex-offenders, the lonely, isolated and elderly.

Covid-19 and lockdown made our work even more difficult. We kept The Hub open and we found that the need multiplied while our shops were closed. Due to restrictions, this work was delivered through the staff and a small team of volunteers. Two years on, the needs have not subsided but are increasing due to the increase in inflation, rising costs and energy costs.

All of the work at Arena Community is only possible through people who shop in our charity shops, coffee shops and furniture stores; those who support monthly through giving to the One Thousand Club and Business Buddies, and also those who donate and provide resources of food, clothing and furniture!

Into our future we want to continue the great work started in Ilkeston and Mansfield.

We want to provide financial stability through cash reserves that we presently don't have.

We want to keep doing more in these towns and into the other areas where we are going in the East Midlands. Serving and helping, loving and caring

for the youngest to the oldest. We don't want to ease back, or stop now.

We sense we have only just begun the good work, but we would humbly ask that you continue to help us in financially giving, volunteering and donating so we can continue to make a difference. A thousand "thank yous" are not enough but here is one heartfelt thank you from me to you.

Kristian

P.S. Will you please continue to join with me in this quest to "Make a Difference" in the lives of our communities.

A word from
LISA HARRISON
Head of Arena Community



You will read in this booklet of the different and wide-ranging needs of the people we help, but the common thread through all of these needs is poverty.

I'd like to answer the question of 'why' I became involved in Arena Community and subsequently became the Community Pastor. The answer

is simple and honest. I was that child in poverty, I was that child born into dysfunction. I was in one way or another a representation of most of the people we serve. I believe this gives me valuable insight and a heart for meeting these needs.

Although Arena Community started with myself, an intern and a single working mother, it has now grown to a team of 80+, all of them contributing their time and gifts. Much like our service users, the team is diverse, ranging from ex-offenders to retired professionals. I hope you will continue to help us turn lives around and break generational cycles because everybody is somebody at Arena.

THE BIG WHY

WHY WE STARTED

There are many outstanding charities that do an incredible job! So why do we need Arena Community?

We are a grass roots “in the trenches” charity, large enough to be impactful and small enough to care! We ensure that we keep connected in our community and work with approximately 45 agencies.

So why did Arena Community Charity begin? The charity was formed in July 2006 when we saw and felt the needs of our communities and decided we should take action. People kept

knocking on our doors for a hot meal, food and supplies because we are a church. Kristian Thorpe, our Lead Pastor, was personally moved by the plight of many and instinctively knew we were only just scratching the surface; so invited a small team to visit one of the first foodbanks in the country in the south of England.

Upon visiting, the resolve of this team was that we **CAN** do this, even though we had no budget, team, food, systems, premises or resources!

Kristian vacated his small office and this was converted into a food store. Food collection started from a splinter ridden pallet with a few bags of

groceries bought each week from our church partners and congregation. We went from a small office, to a metal cabin to a 10,000 sq ft factory store within 3 years. The team started with 2 and now has countless scores of volunteers. We started with helping a few individuals and families to now serving hundreds of families and people each week!

It has since grown into a charity that has supported living accomodation, charity shops, plus buildings housing food banks, clothing banks and furniture banks. We run mentoring and support work and also visit those in prison. We signpost people to the relevant assistance and help

thousands of families each year. We also reach out to help the hurting and vulnerable and needs of children and the elderly in our communities. This charity was formed with a Board of Trustees who bring their considerable marketplace and fiscal experience to a modern efficient charity.

It was from very humble beginnings that the charity started and continues to work with humility, stewarding carefully every penny, valuing every volunteer and partner, and supporting every person we can.

Over the past decade and beyond Arena Community has been actively serving the

community through many impactful local initiatives that benefit thousands each month.

It is the community arm of Arena Church and it continues to make a difference for scores of people through the work of an army of volunteers and a small team of staff.

We practically serve and assist the most vulnerable and hurting across the M1 corridor from J25 -28, which also includes; helping some with life controlling issues, the lone parent doing their best to raise children, children who are hungry and vulnerable and those who are elderly and lonely.

TESTIMONIALS

Arena Community is more than just a church. As it's name states, it is a community serving the community. Reaching out to those who are vulnerable and in need of support, Arena really does help people get back on their feet and feel part of a loving and caring community.

It is always uplifting to be part of the community services, whether at Christmas or summertime and see the support offered and received by so many. The way volunteers from Arena reach out into the community is so well demonstrated by the uplifting performances by the local junior schools, every child showing confidence and enjoying their singing and dancing.

Thank you to Pastor Kristian and his team.

Maggie Throup MP
Member of Parliament for Erewash

We support many families who are vulnerable, especially during the Covid-19 crisis, and I'd like to thank Arena for all their help. Arena has proved invaluable in helping clients with generous and thoughtful food parcels and have always given willingly.

Arena are always more than happy to help, friendly and willing and have supported many families to feed their children. We've had lots of lovely comments from those families who've been thrilled with the food parcels, especially the little extras for the children, such as sweet treats which have really uplifted them.

This has been such a valuable support service for local families during these difficult times. Thank you!

***Di Shaw, Team Coordinator, Children's Social Services,
Derbyshire County Council's Erewash Area Office***

Arena Church provides a much needed community service supporting some of the most vulnerable people in the local community and in recognition of this the Council has helped to fund a number of projects through it's Community Grants programmes.

An excellent example of their work was the introduction of it's own food bank in Ilkeston which provides food and emergency supplies to those most in need. They also took on the lease for the old Woolworths building on Bath Street, Ilkeston in late 2014 to provide a community meeting place at The Project's café whilst facilitating training and employment opportunities for local people.

Arena Church's strength is it's passion to give back to the community which is equally matched by the dedication and commitment of its own staff.

***Lorraine Poyser, previous Director of Community Services
Erewash Borough Council***



THE **NEED**
THE **CHALLENGE**
THE **COST**

THE FIGURES

- Foodbank: since inception in 2011 to date - over 20,000 food parcels have been given away;
- Over the last 2 years over 300 new people have contacted our Foodbank for assistance with food
- Food parcels: as of 2021/22 we give away an average of 75 food parcels per month. 20% of these are for families with children;
- Christmas: 200+ Christmas hampers to the lonely and those in need given away every year;
- Christmas toy giveaway every year helping around 90 families;
- Supported Living Accommodation: Able to now house 10 people on an ongoing basis;
- Seniors services, events and Buddies Friendship Group: regularly serving 200 senior citizens;
- Food Club: selling affordable, reduced food to identified deprived areas, we have around 80 members;
- Care for a Coffee: 30-40 people attending weekly;
- School uniform giveaways to those in need;
- Thousands of items of clothing and furniture given away every year to help families in need;
- Kids and Students Groups running regularly throughout each month reaching children and young people in our communities;
- Furniture and white goods to families in need;

And so much more happening...



OUR BUSINESSES

Costs of over £400,000 to operate this charity each year and rising is one reason why we run our businesses and Arena Community has only secured small grants over the years compared to the scale of the operation. In reality, the charity is only able to function through the goodwill of many local people, generous church donations from Arena Church that runs into thousands each month, and the donations of many generous businesses, business people and individuals.

Historically we have been looking at a £60,000 shortfall to cover all the running costs and we believe the ongoing needs will be even greater. Arena Community is funded by your donations, and every penny makes a difference.

We run our businesses; Arena Hope, Open Door and The Project, our three charity shops, as an endeavour to generate our own income, so that we do not become solely dependent upon grants and government support.

Through the running of charity shops, coffee shops and the repairing and renewing of furniture (which is then sold through our shops and online) we are able to create employment for people in the town. Any profit is put straight back into Arena Community. This enables Arena Community to provide many services across the areas that we serve.

ARENA HOPE

Arena Hope charity shop is situated on the Market Place at the heart of Ilkeston. Established in 2009 it has been serving the town by selling quality, new and pre-owned clothing and goods at affordable prices, in a warm and friendly environment. We stock a huge variety of products including clothing, jewellery, books, bric-a-brac, toys, homewares and much more.

OPEN DOOR

The Open Door charity shop is situated on Ladybrook Place in Mansfield. In February 2020 we marked a milestone of it's 20th anniversary. The shop has been a focal point in Ladybrook Place and reaches hundreds each week with clothing, bric a brac and light refreshments, as well as running various social gatherings.

THE PROJECT

In January of 2009, Woolworths stores nationwide closed down due to problems created by the worldwide financial crisis. The old and dilapidated Woolworths store at the bottom of Bath Street in Ilkeston became vacant.

Due to the actions of a benevolent landlord, support from volunteers and church members, a grant from Erewash Borough Council and businesses that supported the work, The Project now hosts a vintage shop and a cafe which generates income to fund Arena Community.



OTHER
INITIATIVES
TO SUPPORT
THE WORK

THE ONE THOUSAND CLUB

The One Thousand Club is an initiative that if one thousand people pledge to give £5 per month (or whatever they can afford) then the small becomes large.

One thousand regular monthly donors means £5000 a month to not only cover our operating costs (such as building costs, transporting furniture costs etc.) but with that amount of money coming in regularly we can expand and reach out and do more for the ever increasing needs.

£5 per month x 1000 people = £5000

BUSINESS BUDDIES

Over the years we have had a number of business owners who have wanted to support and give to the work of Arena Community through their business.

We are a registered charity and you are able to give from your profits to Arena Community. Please speak to your accountant or financial adviser for further guidance with this. The generosity of businesses and business people has and is an ongoing support to help us achieve our goals.

Our Business Buddies initiative is to see 20 business owners/people give £100 per month thus giving £2,000 regular income into Arena Community.

We love our business people and we are grateful for many who sow generously, knowing it's not just individuals but also businesses that are making a difference.

20 businesses x £100 per month = £2,000 per month



THE WORK OF **ARENA COMMUNITY**

FOODBANK

The food bank started in response to the needs within Cotmanhay and Ilkeston. It was clear that individuals and families were struggling to afford even the most basic necessities. It has since grown to other areas around our communities. We provide parcels for both the individual and family. This parcel provides basic food and toiletries for thousands of people each year and the needs continue to grow.

FURNITURE BANK

We provide furniture and white goods for families in hardship and including domestic abuse issues.

CLOTHING BANK

We have so many families that are in need of clothing. We have a clothing bank that gives away thousands of items each year including shoes, trousers, jumpers, coats.

FOOD CLUB

We have identified a need for a Food Club in Mansfield to assist families in a food crisis. This preventative initiative gives dignity of choice for people to choose their own food items and a small charge enables them to have money for utilities.

This Food Crisis Prevention Initiative was founded in Manchester and Mansfield was one of the next towns to join up. With the assistance of Mansfield District Council and Family Action partnership we have identified 10 areas in Mansfield that meet the criteria for a FOOD CLUB. Since the launch of the Food Club in 2021 this has now grown to 80 members using our services and we are expecting this will increase further.

CARE FOR A COFFEE

Care for a Coffee operates twice a week, at Arena Mansfield, serving the needs of 30-40 people and growing each week who are lonely, homeless and vulnerable.

FREE MEALS

We also run a service that gives away a free meal and run social events for some that could not afford to go otherwise. We have served multiple thousands of meals to those in need over recent years.

HOMELESS PACKS

We provide homeless food packs, clothing and sleeping equipment. Boots/shoes are also offered.

FREE SHOWERS

A hot shower that provides washing facilities for the homeless. This also includes toiletries being made available.

LAUNDRY FACILITIES

Washing and Drying machines for people and families without adequate facilities in their home.

WINTER SHELTER

Partnering with the Winter Shelter in Mansfield for many homeless people.

HOME AND GARDEN REFURBISHMENT

We may not be able to meet the needs for every home but from time to time our Community Team are aware of desperate needs of homes and gardens that require renovating; this ranges from a complete home makeover to garden renovations and much in between. These renovations are always out of the needs that are brought to our attention and the willingness of our small team and volunteers to meet those needs.

ARENA SENIORS

Our Buddies group meets every Wednesday at Arena Ilkeston, and we are hoping to launch into other areas with further funding. This is a friendship group for senior citizens to come and enjoy light refreshments, fun and friendship. Throughout the year our team also runs services and events; the Easter Celebration, Harvest Festival and Christmas Carol Service are services specifically geared towards senior citizens and are followed by complimentary refreshments. We also hold ticketed events in the Summer and at Christmas where we enjoy food and fun together with quizzes, dancing and singing. This work continues to grow.

SUPPORTED LIVING ACCOMODATION

Arena Community began a supported housing programme at the end of 2014 for vulnerable individuals in the community. People often arrived at the foodbank who were homeless or who wanted to change their lives but did not know where to start.

We have 4 shared supported houses comprising 2-3 bedrooms per house and one 'move-on' flat. Our houses are single sex and we can accommodate men and women. Through the rental of these properties, a base for 10 people who otherwise would be homeless or sofa surfing. We provide a room and all the necessary facilities and ongoing support and training through our Community Team.

SUPPLIES FOR BABY

We provide equipment for parents and families including a wide range of baby and infant essentials such as formula, milk and nappies.

KIDS CLUB

We run a Kids Club partnering with local schools. It provides a safe place for them to play and learn.

SUMMER RESIDENTIAL

We organised a Summer holiday residential for 20 children who have never had the means or opportunity to be able to go away on holiday.

CENTRAL HUB

We have established a Central Hub housing our Community staff who oversee approximately 90 volunteers and growing. At the Hub we partner with over 45 organisations in our various locations.

CHRISTMAS HAMPERS

Each year at Christmastime we have a team of volunteers who put together and distribute food hampers and parcels for families, singles and the elderly who are in need.

CHRISTMAS GIFTS

Through the help of our local schools and social services we are able to find the most vulnerable children in our areas and provide them with Christmas gifts. Many of these children would receive very limited or no gifts at Christmas but with the support of our partners we are able to provide quality gifts that bring joy and happiness into these families' lives at Christmas time. Some of the stories from individuals whose families have received these gifts have been heart breaking.

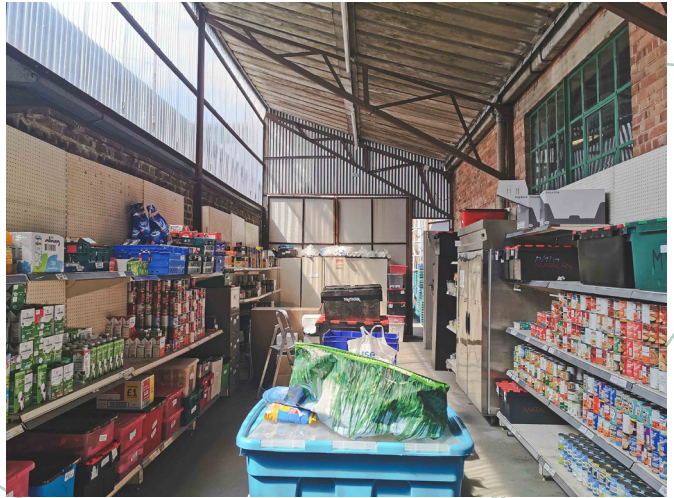
EASTER EGGS

We love to share the joy of Easter by spreading the love in our local schools, whom we have a relationship with, and give every child in the school an Easter egg. Due to the volume of students the number of schools is limited but we are hoping with increased funding and generous donations we can give to more schools in our areas and bring some happiness to these children in deprived areas.

SERVE DAY

We love to go into our Communities in full force on Serve Day. This is a day each year where all of our volunteers and team wear a "Serve Day" t-shirt and through various giveaways, practical projects, such as renovating gardens for local nursing homes, children's activities, litter picking and more - we serve the needs of our communities.





HOW YOU CAN GET INVOLVED

Through our **Let's Do This** campaign, we aim to reach more people, help more people and combat the problems that we see happening now and for the future.

We have been looking at a £60,000 shortfall to cover all the running costs and we believe the ongoing needs will be even greater. To be able to continue the work of Arena Community we are asking for regular donations, to assist with monthly ongoing costs. It is also possible to give one-off gifts - every penny makes a difference.

Joining our Business Buddies, One Thousand Club, or giving any amount is greatly appreciated and allows us to continue to meet the needs which are ever increasing before us.

We are also seeking funding of £25k - £30k per year that will enable us to strengthen the base and deliver on the work we do.

“I’m in! How do I give?”

Brilliant! We have a few different methods for you to choose from, whichever suits you best

THE ONE THOUSAND CLUB

1000 people to commit to just **£5 every month**
(Add reference “One Thousand Club” on payment.

BUSINESS BUDDIES

20 businesses to commit to giving **£100 every month**

ONE-OFF GIFTING

Or please give a gift of any amount to help in the ongoing work of the charity

This will allow us to significantly help our community.
Join our **Let’s Do This** campaign and give what you can
– we need your support now more than ever.

There are several ways to help –
you can give financially any of the following ways:

STANDING ORDER

NatWest Bank
Ilkeston, DE7 8HF
Sort code 60-11-37
Account no 23049669

NOW DONATE

Donate using
Now Donate via
arenachurch.co.uk/giving

PAYPAL

paypal.me/arenacommunity
PayPal will incur a small fee
for Arena Community.

CHEQUES

Cheques made payable to
Arena Community can be posted to:
1 Rutland Street, Ilkeston,
Derbyshire, DE7 8DG.

GIFT AID

If you are a UK taxpayer don't forget your giving could be increased through Gift Aid meaning Arena Community will get even more support! For every £1 you donate Arena Community receives 25p through gift aid. Simply visit arenacommunity.co.uk/gift-aid to complete the Gift Aid Form and your giving will make an even larger impact.

All the information above is also available on the Arena Community website:- www.arenacommunity.co.uk/giving

If you need any further help please email
admin@arenacommunity.co.uk

Thank you for your ongoing support and commitment to Arena Community. Through your generous gifts and donations you are helping Arena Community to impact thousands of lives each year.

We believe at Arena Community that “He who sows generously also reaps generously.”

Believing for great success in your life and business.



T: 0115 930 9841 E: admin@arenacommunity.co.uk
W: www.arenacommunity.co.uk

Arena Community is a company limited by guarantee. Registered in England & Wales no. 05116407 and registered charity no. 1115569
Registered Address: Cliffe House Hill, 22-26 Nottingham Road, Stapleford, Nottingham, NG9 8AA